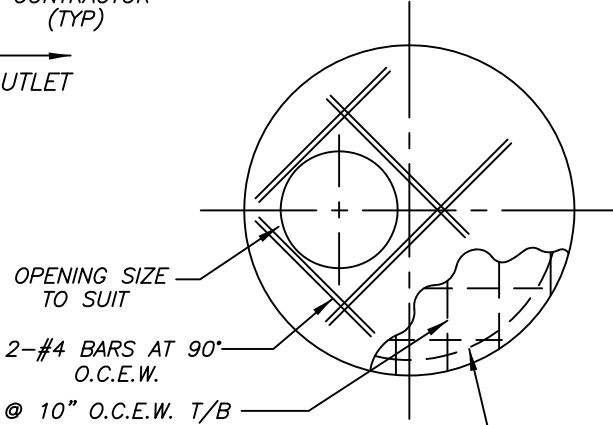
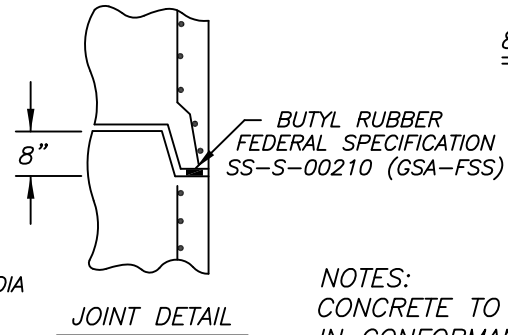


PLAN VIEW OF PRECAST MANHOLE BASE



AREA OF CIRCUMFERENTIAL STEEL (SIDE WALLS)
 .24 SQ. IN. PER LIN. FT. (8'-0"Ø)
 .12 SQ. IN. PER LIN. FT. (4'-0"Ø)

REINFORCEMENT LAYOUT FOR 8'-0" DIA MANHOLE FLAT TOP



JOINT DETAIL

NOTE:

| CONE DIMENSIONS | |
|-----------------|--------|
| DIA OPENING | HEIGHT |
| 24" | 36" |
| 30" | 36" |

- APPROX. WEIGHTS:
- BASE = 7178 LBS
 - RISERS = 3090 LBS/FT
 - TOP SLAB = 7469 LBS
 - START RING = 6651 LBS

TYPICAL 8'-0" DIA MANHOLE WITH 4' DIA MANHOLE STACK

NOTES:
 CONCRETE TO TEST 4000 PSI @ 28 DAYS
 IN CONFORMANCE WITH ASTM C-478
 DESIGN FOR H2O LOADING

| | | |
|--|---|-------------|
| Precast Concrete Sales Co. | | |
| 123 Route 303 Valley Cottage, N.Y. 10989 | | |
| Tel. (845) 268-4949 - Fax (845) 268-4376 | | |
| CONT. | | |
| JOB | 8'-0" DIA CONCRETE MANHOLE WITH 48" MANHOLE STACK | |
| DATE | DRAWN BY | DRAWING NO. |
| 01/16 | CLASSIC DESIGN | 3-8-S |