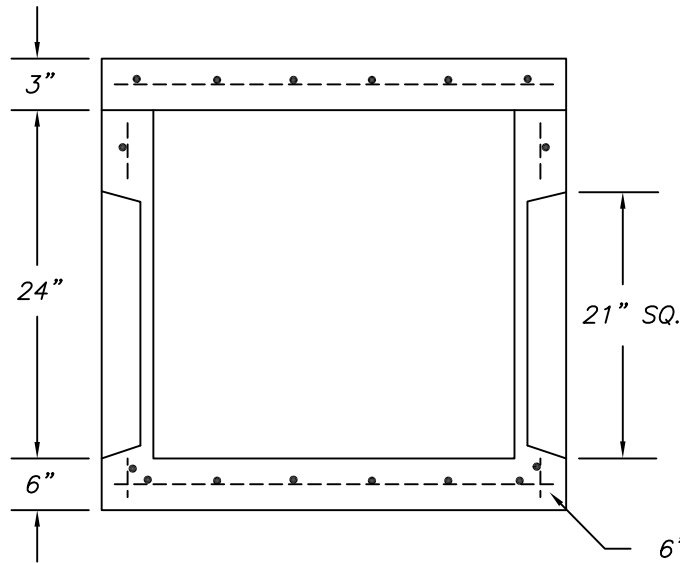


PLAN VIEW



SECTION

NOTES :

- * CONCRETE TO TEST 4000 PSI @ 28 DAYS
- * WEIGHTS :
 SPLICE BOX - 1,755 LBS.
 TOP SLAB - 340 LBS. (3" THICK)
- * CAST IRON FRAME & COVER ALSO AVAILABLE

<i>Precast Concrete Sales Co.</i>		
123 Route 303 Valley Cottage , N.Y. 10989		
Tel. (845) 268-4949 - Fax (845) 268-4376		
CONT.		
JOB		
<i>24"x24"x24" SPLICE BOX</i>		
DATE	DRAWN BY	DRAWING NO.
1/16	CLASSIC DESIGN	10-24