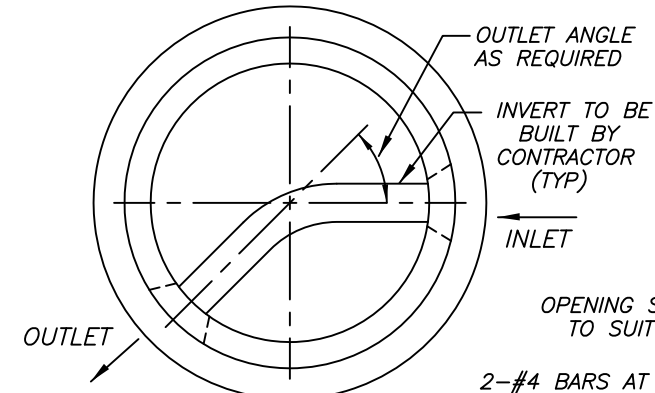


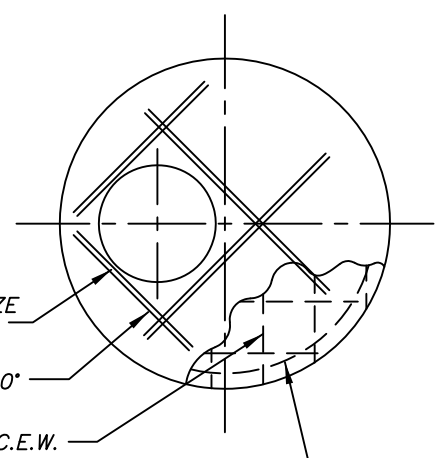
MANHOLE ASSEMBLY

APPROX. WEIGHTS:

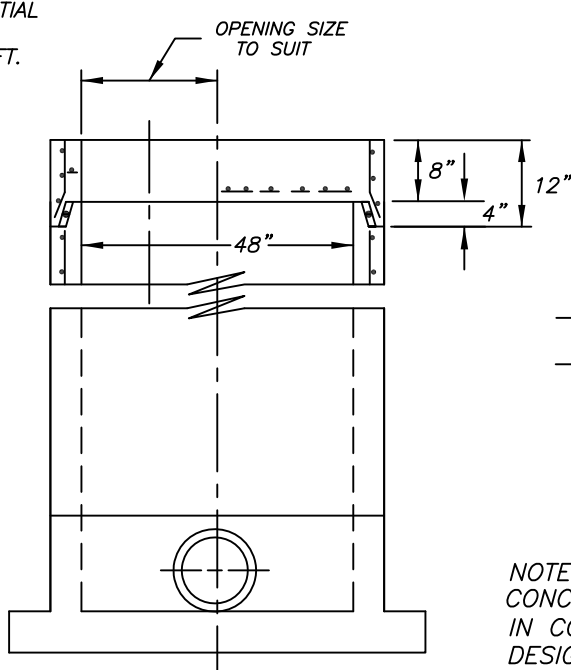
- BASE = 2800 LBS
- RISERS = 875 LBS/FT
- TOP SLAB = 1575 LBS
- 36" HIGH CONE = 2470 LBS



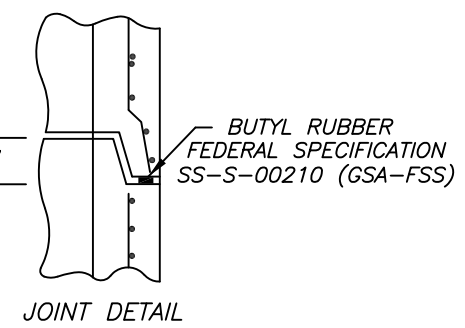
PLAN VIEW OF PRECAST MANHOLE BASE



REINFORCEMENT LAYOUT FOR TOP SLAB



TYPICAL 48" DIA MANHOLE WITH TOP SLAB



JOINT DETAIL

NOTES:
 CONCRETE TO TEST 4000 PSI @ 28 DAYS
 IN CONFORMANCE WITH ASTM C-478
 DESIGN FOR H2O LOADING

NOTE:

CONE DIMENSIONS	
DIA OPENING	HEIGHT
24"	36"
30"	36"

Precast Concrete Sales Co.		
123 Route 303, Valley Cottage, N.Y. 10989		
Tel. (845) 268-4949 - Fax (845) 268-4376		
CONT.		
JOB		
4'-0" DIA. CONCRETE MANHOLE WITH SPREAD FOOTING - TYPICAL ASSEMBLY		
DATE	DRAWN BY	DRAWING NO.
1/16	CLASSIC DESIGN	3-4E