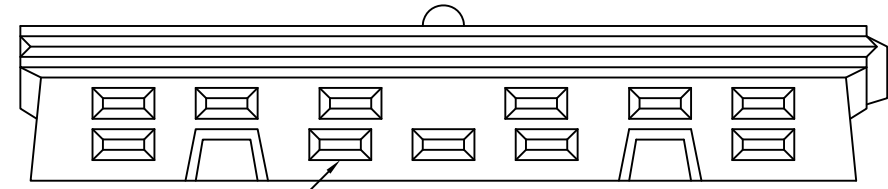


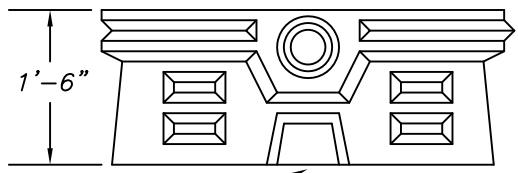
PLAN VIEW

- SPECIFICATIONS
- * CONCRETE MINIMUM STRENGTH - 5,000 PSI AT 28 DAYS
 - * DESIGN LOADING - STANDARD UNITS : 600 P.S.F.
 - OPTIONAL UNITS : AASHTO - HS20 - 44



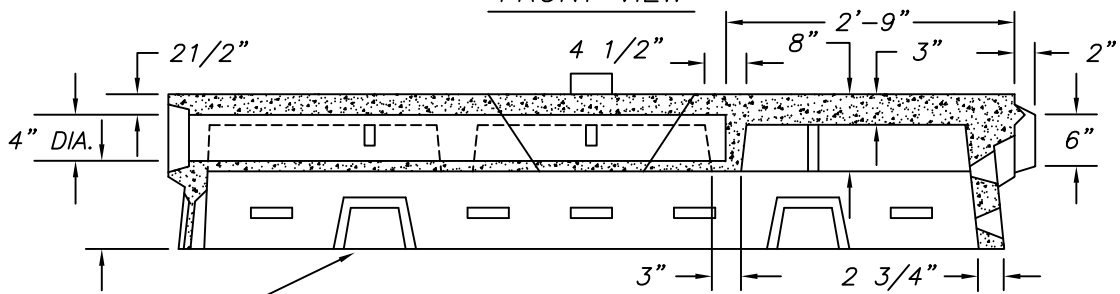
(30) 2' x 5 1/2" OPENINGS

FRONT VIEW



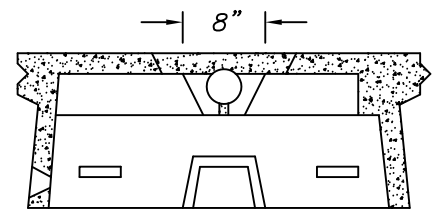
KNOCKOUTS FOR TRENCH INSTALLATION

SIDE VIEW



KNOCKOUTS FOR BED INSTALLATION

SECTION A-A



SECTION B-B

<i>Precast Concrete Sales Co.</i> 123 Route 303 Valley Cottage, N.Y. 10989 Tel. (845) 268-4949 - Fax (845) 268-4376			
JOB	LEACHING CHAMBER		
CONT.			
DATE	DRAWN BY	DRAWING NO.	
1/16	CLASSIC DESIGN	700-48	