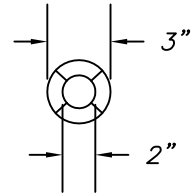
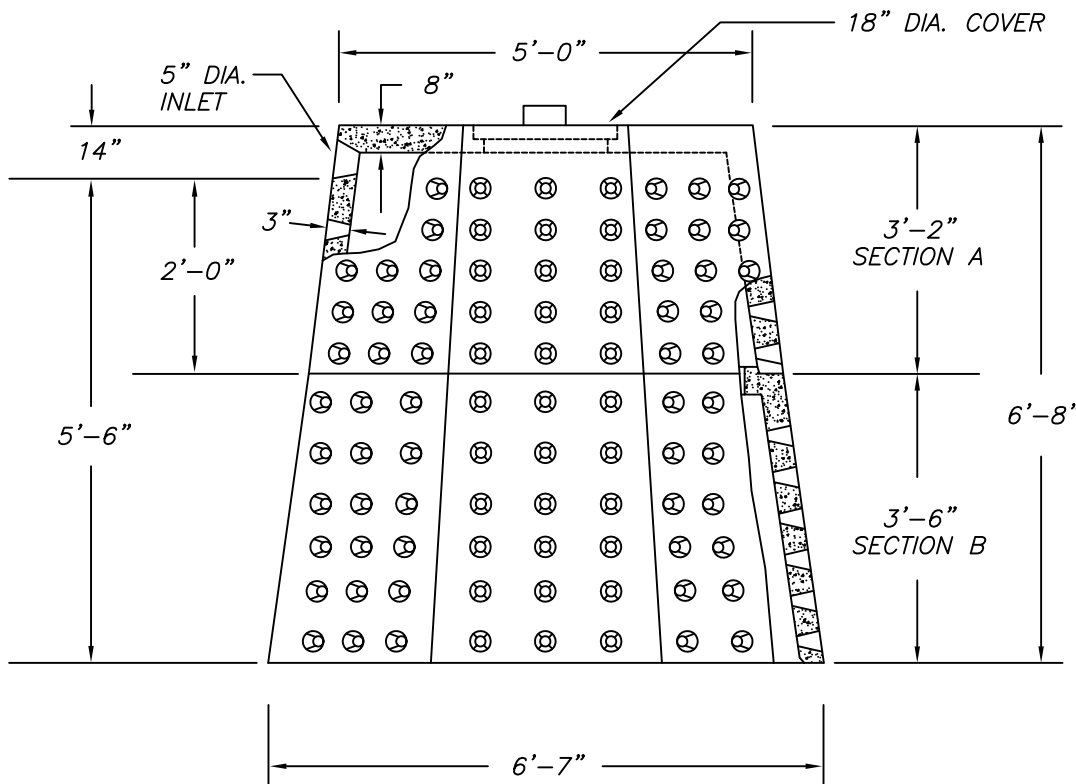


PLAN VIEW



DETAIL OF OPENING



ELEVATION

NOTES :

- * CONCRETE TO TEST 4000 PSI @ 28 DAYS
- * STEEL REINFORCEMENT-ASTM-A-615
- * SECTION A - 370 GALLONS 6'-0" ACROSS BOTTOM
WEIGHT - 2,000 LBS.
- * SECTION B - 630 GALLONS 6'-7" ACROSS BOTTOM
WEIGHT - 3,000 LBS
- * LOAD RATING - HS20

<i>Precast Concrete Sales Co.</i>		
123 Route 303 Valley Cottage , N.Y. 10989 Tel. (845) 268-4949 - Fax (845) 268-4376		
CONT.		
JOB		
5'-0" x 6'-7" DRYWELL TWO SECTIONS		
DATE	DRAWN BY	DRAWING NO.
1/16	CLASSIC DESIGN	705-A/B