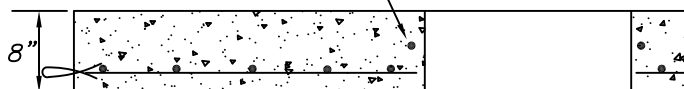


(4) #4 BARS AT 90° AROUND OPENING



**NOTES :**

- \* CONCRETE TO TEST 4000 PSI @ 28 DAYS
- \* REBARS ASTM A-615-40
- \* SIZE AND SHAPE OF OPENING TO SUIT
- \* APPROX. WEIGHT = 4,700 LBS.
- \* LOAD RATING - HS20

<i>Precast Concrete Sales Co.</i>		
123 Route 303 Valley Cottage , N.Y. 10989		
Tel. (845) 268-4949 - Fax (845) 268-4376		
CONT.		
JOB		
<b>8'-0" DIA. TOP SLAB</b>		
DATE	DRAWN BY	DRAWING NO.
1/16	CLASSIC DESIGN	708-T