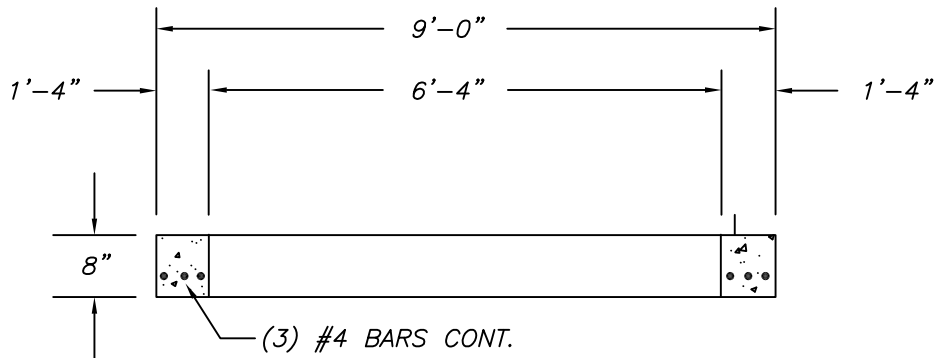


(3) CABLE LIFT HOOKS
AT 120°

PLAN VIEW



(3) #4 BARS CONT.

SECTION

NOTES :

- * CONCRETE TO TEST 4000 PSI @ 28 DAYS
- * REBARS ASTM A-615-40
- * APPROX. WEIGHT = 3,050 LBS.

<i>Precast Concrete Sales Co.</i>		
123 Route 303 Valley Cottage , N.Y. 10989		
Tel. (845) 268-4949 - Fax (845) 268-4376		
CONT.		
JOB		
<i>8'-0" DIA. FOOTING RING</i>		
DATE	DRAWN BY	DRAWING NO.
1/16	CLASSIC DESIGN	708-F