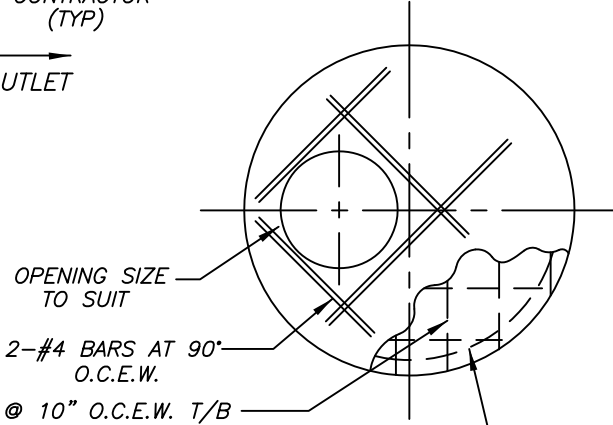
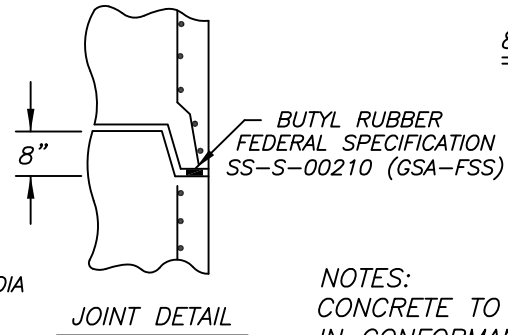


PLAN VIEW OF PRECAST MANHOLE BASE



AREA OF CIRCUMFERENTIAL STEEL (SIDE WALLS)  
 .24 SQ. IN. PER LIN. FT. (8'-0"Ø)  
 .12 SQ. IN. PER LIN. FT. (4'-0"Ø)

REINFORCEMENT LAYOUT FOR 8'-0" DIA MANHOLE FLAT TOP



JOINT DETAIL

NOTE:

CONE DIMENSIONS	
DIA OPENING	HEIGHT
24"	36"
30"	36"

- APPROX. WEIGHTS:
- BASE = 7178 LBS
  - RISERS = 3090 LBS/FT
  - TOP SLAB = 7469 LBS
  - START RING = 6651 LBS

TYPICAL 8'-0" DIA MANHOLE WITH 4' DIA MANHOLE STACK

NOTES:  
 CONCRETE TO TEST 4000 PSI @ 28 DAYS IN CONFORMANCE WITH ASTM C-478  
 DESIGN FOR H2O LOADING

Precast Concrete Sales Co.  
 123 Route 303 Valley Cottage, N.Y. 10989  
 Tel. (845) 268-4949 - Fax (845) 268-4376

CONT.	
JOB	
8'-0" DIA CONCRETE MANHOLE WITH 48" MANHOLE STACK	
DATE	DRAWN BY
01/16	CLASSIC DESIGN
DRAWING NO.	3-8-S