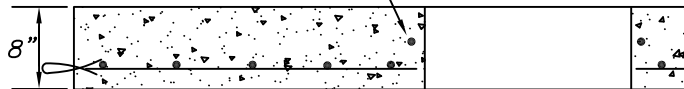


(4) #4 BARS AT 90° AROUND OPENING



NOTES :

- * CONCRETE TO TEST 4000 PSI @ 28 DAYS
- * REBARS ASTM A-615-40
- * SIZE AND SHAPE OF OPENING TO SUIT
- * APPROX. WEIGHT = 7,500 LBS.
- * LOAD RATING - HS20

Precast Concrete Sales Co.		
123 Route 303 Valley Cottage , N.Y. 10989		
Tel. (845) 268-4949 - Fax (845) 268-4376		
CONT.		
JOB		
10'-0" DIA. TOP SLAB		
DATE	DRAWN BY	DRAWING NO.
1/16	CLASSIC DESIGN	710-T